

FOR SALE

Mixed Use Property

IN THE VIBRANT H STREET CORRIDOR

1447 MARYLAND AVE., NE, WASHINGTON, DC 20002



Contacts:

Ken Noroozi

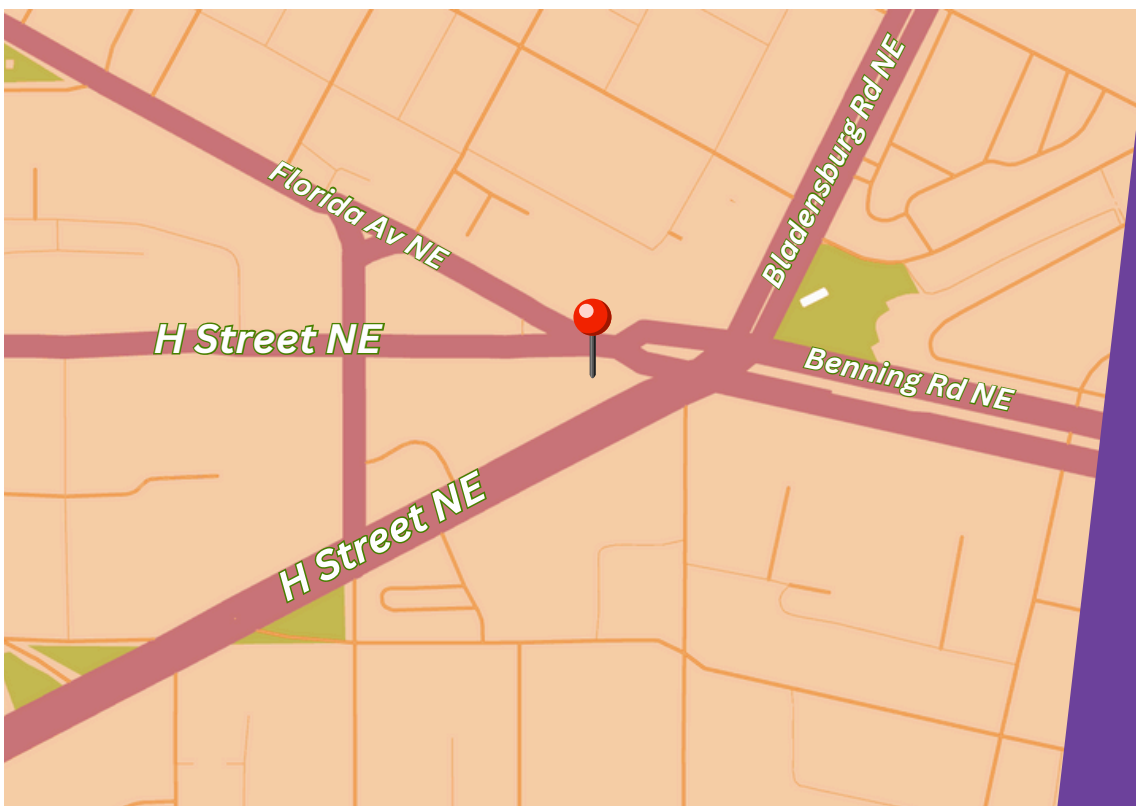
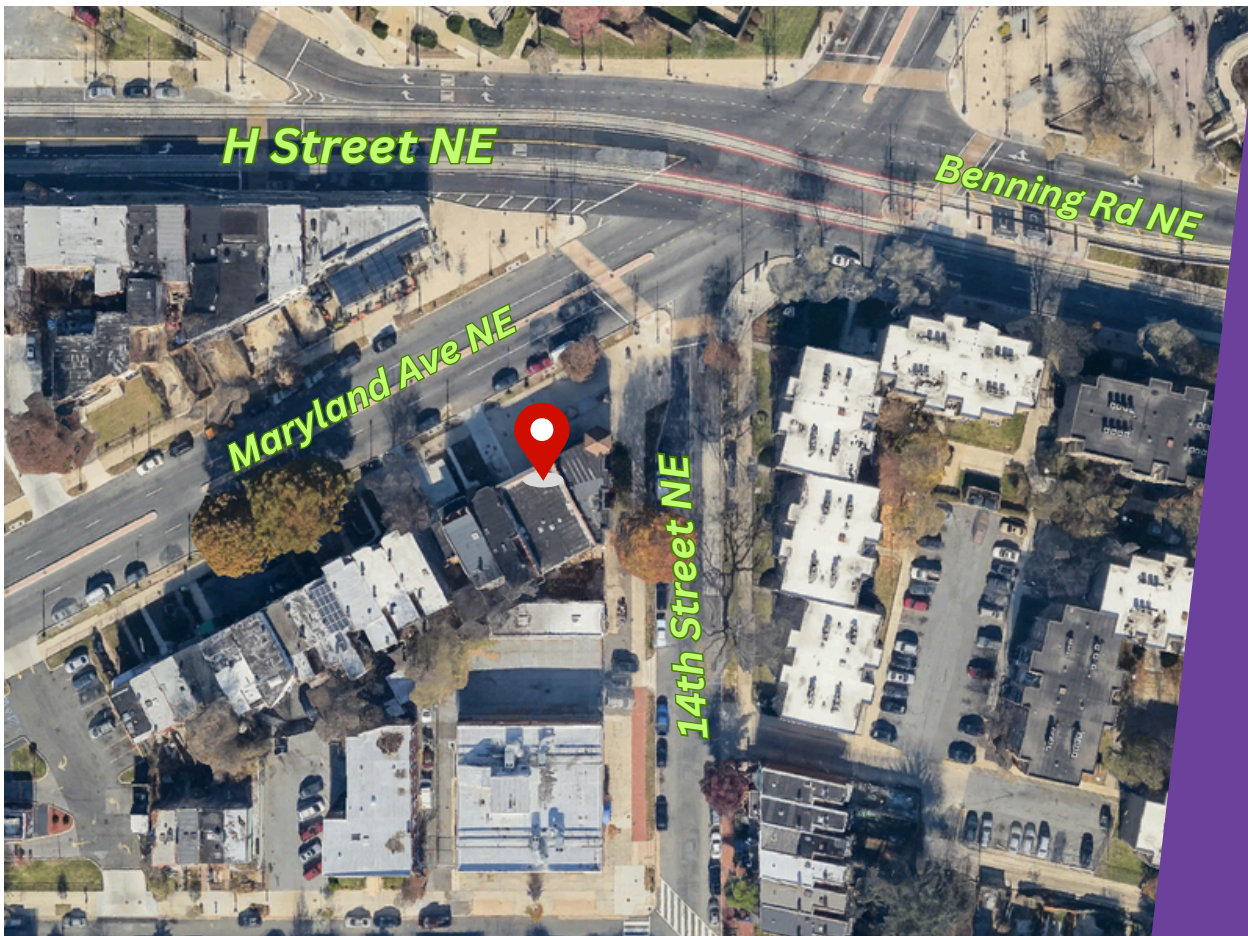
O: 202.347.3760 | M: 301.728.6037

ken@vantagecr.com

910 17th St., NW, Washington, DC 20006



DISCOVER THE UNSEEN: YOUR SOURCE FOR OFF-MARKET COMMERCIAL PROPERTIES



Contacts:

Ken Noroozi

O: 202.347.3760 | M: 301.728.6037

ken@vantagecr.com

910 17th St., NW, Washington, DC 20006



DISCOVER THE UNSEEN: YOUR SOURCE FOR OFF-MARKET COMMERCIAL PROPERTIES

PROPERTY DATA

An exceptional investment opportunity in the thriving H Street Corridor, this fully developed property features 8 residential units and ground-floor retail space. Perfectly positioned to capitalize on the vibrant mix of residential, retail, and entertainment options in the neighborhood, the property benefits from high visibility and strong foot traffic.

The residential units offer stabilized income potential, while the ground-floor retail space provides versatility for various business types. Located just steps from major transportation, popular restaurants, and retail hubs, this property is ideal for investors looking for a turn-key asset in one of Washington, DC's most sought-after areas.

Seize this opportunity to own a prime asset in a rapidly growing market.

Land Area: 2,160 SF
Building Area: 4,500 SF
Zoning: NMU-4/H-A
Asking Price: Negotiable

Contacts:

Ken Noroozi

O: 202.347.3760 | M: 301.728.6037

ken@vantagecr.com

910 17th St., NW, Washington, DC 20006



DISCOVER THE UNSEEN: YOUR SOURCE FOR OFF-MARKET COMMERCIAL PROPERTIES