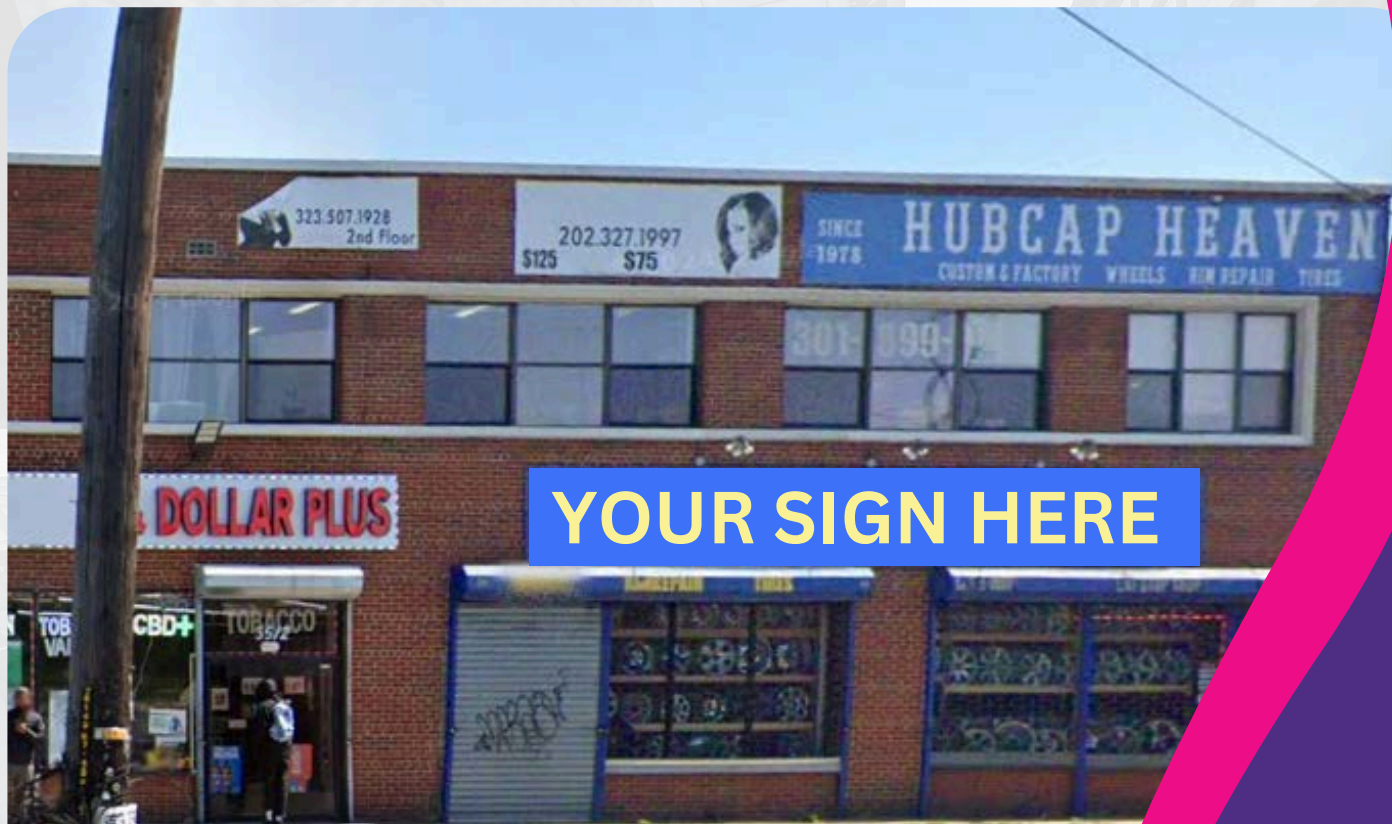


FOR LEASE

Prime Location for Retail & Restaurant

IN THE VIBRANT SUITLAND AREA

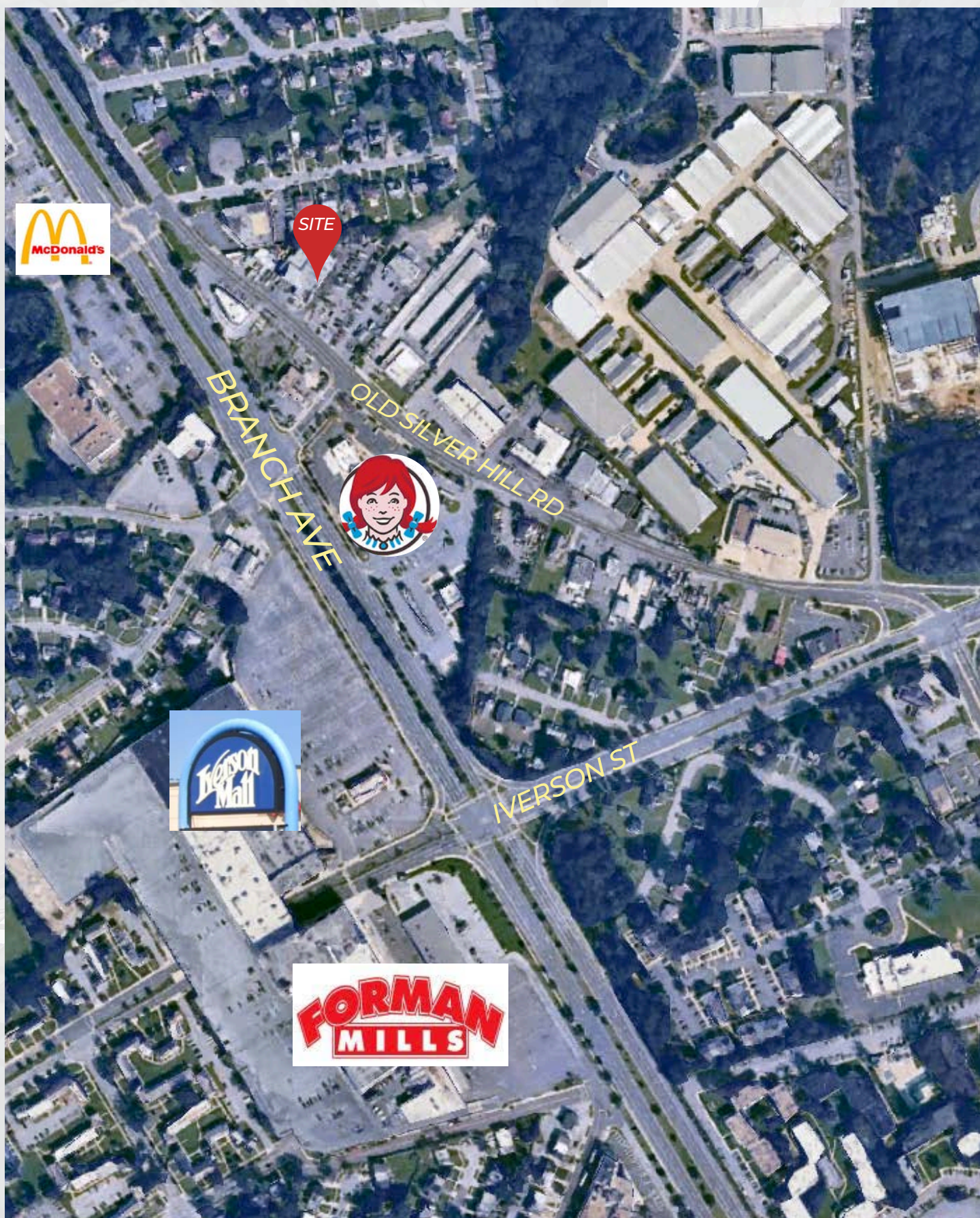
3512 OLD SILVER HILL RD. SUITLAND, MD 20746



VANTAGE
COMMERCIAL REALTY

DISCOVER THE UNSEEN: YOUR SOURCE FOR OFF-MARKET COMMERCIAL PROPERTIES

CONTACT:
RUCHI KAPANI:
(202) 347-3760 | M: (571) 293-0259
ruchi@vantagecr.com



Prime Retail Space for Lease – High Visibility Location!

3512 Old Silver Hill Rd, Hillcrest Heights, MD 20746

Unlock the potential of your business with this high-visibility ground-floor retail space in the heart of Hillcrest Heights! This prime location offers strong foot traffic, excellent exposure, and easy accessibility, making it an ideal opportunity for retailers, service businesses, and food operators looking to thrive in a well-established commercial corridor.

Property Highlights:

Highly Visible Storefront – Located on a well-traveled road with strong daily traffic

Convenient Access – Easily accessible from major routes, minutes from Washington, DC

Surrounded by Retail & Residential Density – A vibrant area with national and local retailers nearby

Versatile Space – Suitable for retail, service, or food concepts establishment

Ample Parking – Onsite and street parking available for customers

Join a growing business hub and position your brand for success in this high-demand retail corridor!.

Space Area: 3,000 SF

Zoning: CGO

Asking Price: \$30.00/SF/NNN